

# CHARLTON CHESS CONGRESS

PRESS

DATE	CLASS OR SECTION	ROUND	BOARD
28/6/74	Charlton	1	No 41

WHITE M. Basman BLACK T. Collins  
 RESULT:- WHITE WIN/DRAW/BLACK WIN (Delete as necessary)

COMPLETE DETAILS ABOVE CLEARLY AT THE END OF THE GAME

BOTH PLAYERS MUST SIGN THE SCORE SHEET.

HAND IN RESULT - WITHOUT DELAY - TOP COPY PLEASE

THE WINNER IS RESPONSIBLE, OR, IF THE GAME BE DRAWN, THE PLAYER OF THE WHITE PIECES.

HAND IN CARBONS AT THE SAME TIME

THE DUPLICATE IS FOR RETENTION BY THE PLAYER

WHITE	BLACK	WHITE	BLACK
1 e4	c5	21 R e7	Nf6
2 Nf3	Nc6	22 Nd6	Bf8
3 Be2	d6	23 Re8	Nex
4 c3	g6	24 N x8.	Nc6
5 d4	Bg7	25 Nf6+	Kf7
6 O-O	Nf6	26 Nd5	Ra7
7 Nbd2	O-O	27 Bf4	Rb5?
8 h3	Bd7	28 Ng5+	Kg7.
9 a3	a5	29 Re1	Ne9
10 Bd3	Qc7	30 Be5+	Kh6
11 Re1	Rfb8	31 Nf7+	Kh5
12 d5	Nd8	32 Nf4+	
13 a4	Qg6	33	
14 Qb3	b6	34	
15 Bb5	Bb5:	35 T.C.	Collins
16 Qb5:	Qd7:	36	
17 Qd7:	Nd7:	37	
18 de:	fe:	38	
19 Nc4	ds	39	
20 ed:	ed:	40	



# CHARLTON CHESS CONGRESS

PRESS

DATE	CLASS OR SECTION	ROUND	BOARD
29/6/74	O P 2	2	No 1

WHITE... A. L. Hosking BLACK... R. B. Berman  
 RESULT:- WHITE WIN/DRAW/BLACK WIN (Delete as necessary)

COMPLETE DETAILS ABOVE CLEARLY AT THE END OF THE GAME

BOTH PLAYERS MUST SIGN THE SCORE SHEET.

HAND IN RESULT - WITHOUT DELAY - TOP COPY PLEASE

THE WINNER IS RESPONSIBLE, OR, IF THE GAME BE DRAWN, THE PLAYER OF THE WHITE PIECES.

HAND IN CARBONS AT THE SAME TIME

THE DUPLICATE IS FOR RETENTION BY THE PLAYER

WHITE	BLACK	WHITE	BLACK
1 e4	b6	21 Qa4	Rc1:
2 d4	Bb7	22 Rc1:	Qb2:
3 Nc3	e6	23 Rb1	Qa3
4 Nf3	Bb4	24 Qd7	Bc8
5 Bd3	Ne7	25 Qb5	Qa2:
6 O-O	Ng6	26 Rc1	Ne5
7 Ne2	O-O	27 P4	Ng4
8 c3	Be7	28 Qe2	Ne3:
9 Nf4	Q5	29 Qe3:	Bc5:
10 Be3	cd1:	30 Rc5:	bc1
11 cd1:	Nc6	31 Nf1	ed1:
12 Rc1	Qb8	32 Qc5:	de1:
13 Nh5	f6	33 Ne4	Bb7
14 Nd2	Nb4	34 Nf2	Qd5
15 Bb1	Ba6	35 Qd5:	Bd5:
16 Re1	Nd3	36 Ne3	Bf7
17 Bd3:	Bd3:	37	
18 Qb3	Ba6	38	
19 d5	Qe5	39	
20 Ng3	Rac8	40	



# CHARLTON CHESS CONGRESS

PRESS

DATE	CLASS OR SECTION	ROUND	BOARD
29/6/74	Charlton	3	No

WHITE..... M. Basman BLACK..... A. Loxton  
 RESULT:- WHITE WIN/DRAW/BLACK WIN (Delete as necessary)

COMPLETE DETAILS ABOVE CLEARLY AT THE END OF THE GAME

BOTH PLAYERS MUST SIGN THE SCORE SHEET.

HAND IN RESULT - WITHOUT DELAY - TOP COPY PLEASE

THE WINNER IS RESPONSIBLE, OR, IF THE GAME BE DRAWN, THE PLAYER OF THE WHITE PIECES.

HAND IN CARBONS AT THE SAME TIME

THE DUPLICATE IS FOR RETENTION BY THE PLAYER

WHITE	BLACK	WHITE	BLACK
1. e4	c5	21. Bb3	Qb4
2. Nf3	e6	22. Bd4	ed:
3. Be2	Qc7	23. Qa3	Qd2
4. c4	a6	24. Bd1	Bb7
5. O-O	Nc6	25. Bf3	f5
6. d4	cd:	26. Rf5	Rf5:
7. Nd4	Nf6	27. ef:	Bf3
8. Nc2	Bb6	28. Qf1	Qb2:
9. Nc6:	bc:	29. Qd5+	Rf7
10. Qd4	d6	30. Rf1	
11. Qd3	oo	31. 1	0
12. Bg5	Nd7	32.	
13. Bd2	Ba5	33.	
14. Rad1	Nc5	34. M. Basman	
15. Qg3	e5	35.	
16. Bh6	f6	36.	
17. Rd6:	Bc3:	37.	
18. Rcb:	Qa7	38.	
19. Rg5:	Bd4	39.	
20. Ras	Ra7	40.	

# CHARLTON CHESS CONGRESS

PRESS

DATE	CLASS OR SECTION	ROUND	BOARD
30/6/74	Open	4	No 1

WHITE L. Blackstock BLACK M. Basman  
 RESULT:- WHITE WIN/DRAW/BLACK WIN (Delete as necessary)

COMPLETE DETAILS ABOVE CLEARLY AT THE END OF THE GAME

BOTH PLAYERS MUST SIGN THE SCORE SHEET.

HAND IN RESULT - WITHOUT DELAY - TOP COPY PLEASE

THE WINNER IS RESPONSIBLE, OR, IF THE GAME BE DRAWN, THE PLAYER OF THE WHITE PIECES.

HAND IN CARBONS AT THE SAME TIME

THE DUPLICATE IS FOR RETENTION BY THE PLAYER

WHITE	BLACK	WHITE	BLACK
1 e4	b6	21 O-O-O	25
2 d4	Bb7	22 Ne6	Rf6
3 f3	e6	23 Nc7:	Bc6:
4 <del>Bb4</del>	<del>h3 Bb4</del>	24 Bc6:	Nc6:
5 Nc3	Bc3:+	25 Nd5	Rf3
6 bc:	db	26 Rd2	Rd8
7 Bd3	Qh4+	27 Rad1	Kb7
8 g3	Qh5	28 Kc2	b5
9 Qd2	Ne7	29 Re2	Rd3
10 Qg5	Qg5:	30 Ne3	b4
11 Bg5	N5c6	31 cb:	Nd4+
12 c5	dc:	32	
13 dc	O-O-O	33	1
14 Bb5	f6	34	
15 Be3	f5	35	
16 Bg5	Rf8	36	M Basman
17 Ne2	h6	37	
18 Be7	Ne7	38	
19 Nf4	fe	39	
20 cb	Ba8	40	



# CHARLTON CHESS CONGRESS

PRESS

DATE	CLASS OR SECTION	ROUND	BOARD
30/6/74	000	5	No

WHITE.....A. Phillips BLACK.....L. Brown  
 RESULT:- WHITE WIN/DRAW/BLACK WIN (Delete as necessary)

COMPLETE DETAILS ABOVE CLEARLY AT THE END OF THE GAME

BOTH PLAYERS MUST SIGN THE SCORE SHEET.

HAND IN RESULT - WITHOUT DELAY - TOP COPY PLEASE

THE WINNER IS RESPONSIBLE, OR, IF THE GAME BE DRAWN, THE PLAYER OF THE WHITE PIECES.

HAND IN CARBONS AT THE SAME TIME

THE DUPLICATE IS FOR RETENTION BY THE PLAYER

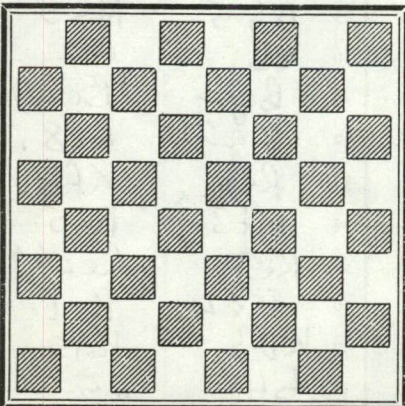
WHITE	BLACK	WHITE	BLACK
1 e4	b6	21 Qe8	Ne1!
2 d4	Bb7	22 Ba3	e3 +
3 Nd2	e6	23 f3	Bf3! +
4 Ngf3	Ne7	24 Kg1	Bc7
5 Bd3	Ng6	25 Qf8+	Qf8!
6 Nb3	cs	26 Bf8!	Nc2
7 O-O	Be7	27 Rcl	Rf8!
8 Re1	Qc7	28 Nc7!	Nd4
9 c4	ed!	29 Nb5	Nb5!
10 Nf4!	Nc6	30 cb!	e2
11 Nb5	Qb8	31 Bg2	Bg2!
12 Bf1	O-O	32 Kg2	Re8
13 b3	Rd8	33 Re1	Kf7
14 Bb2	Fb	34 Kf3	Re5
15 g3	Nce5	35 Re2!	Re2!!
16 Nf4	d5	36 Ke2	Ke6
17 Ne6!	de!	37 Kd3	Kd5
18 Nd8!	Nf3+	38 b4	h5
19 Kh1	Bd8	39 a3	g5
20 Qd7	Nf8	40 a4	f5

WHITE		BLACK	
41	a5	F4	61
42	g f:	g f:	62
43	h e2	K e4	63
44	a b:	a b:	64
45	K f3	K b5:	65
46	K f4:	K b4:	66
47	K g5	K c4	67
48	K h5	b5	68
49	K g5	b4	69
50			70
51	0	1	71
52			72
53			73
54	M. B. Asman		74
55			75
56			76
57			77
58			78
59			79
60			80

CHARLTON CHESS CLUB.

CHARLTON HOUSE, CHARLTON VILLAGE, LONDON, S.E.7.

BLACK



WHITE

BLACKS TIME \_\_\_\_\_

Position after

W's

\_\_\_\_\_ move

B's

Sealed move

\_\_\_\_\_

Whites Time

CLUB NIGHTS TUESDAY & THURSDAY 7.00 pm - 10.00 pm